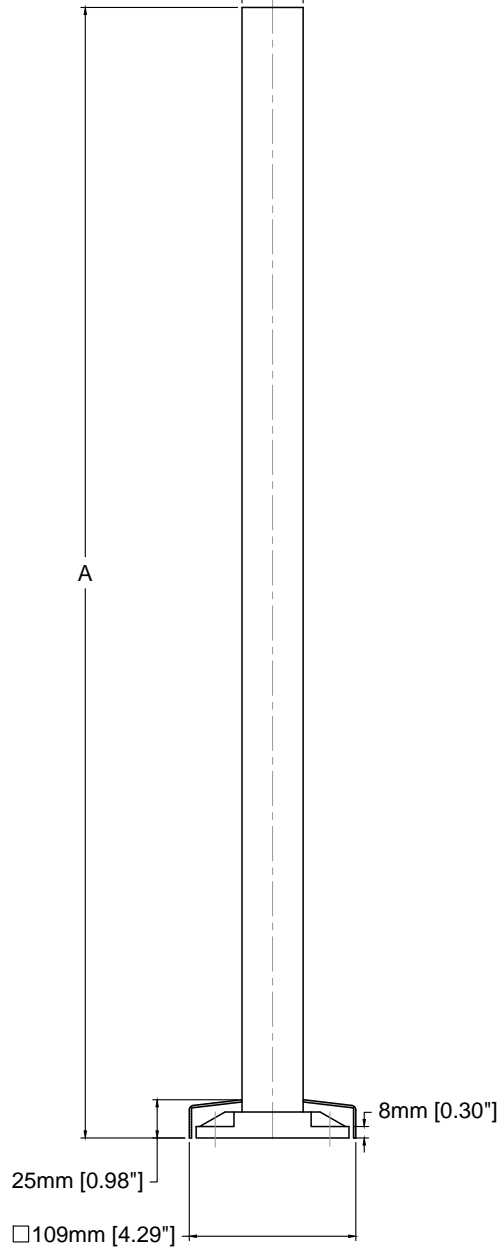
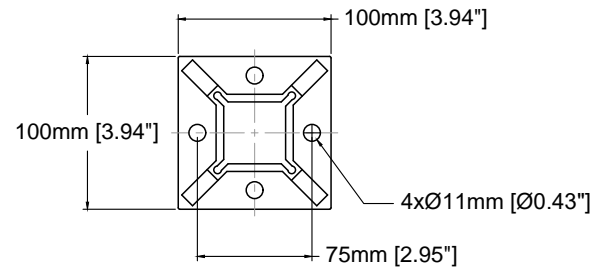


□40x40x2mm  
[1.57"x1.57"x0.08"]



Note:

- All posts are SS316.



Base Plate

Product Code	A mm [in]
SSPSQ4040	1016 [40]
SSPSQ4042	1067 [42]

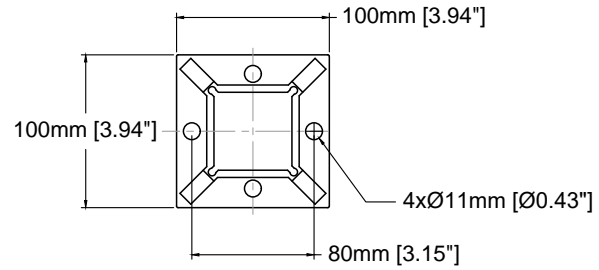
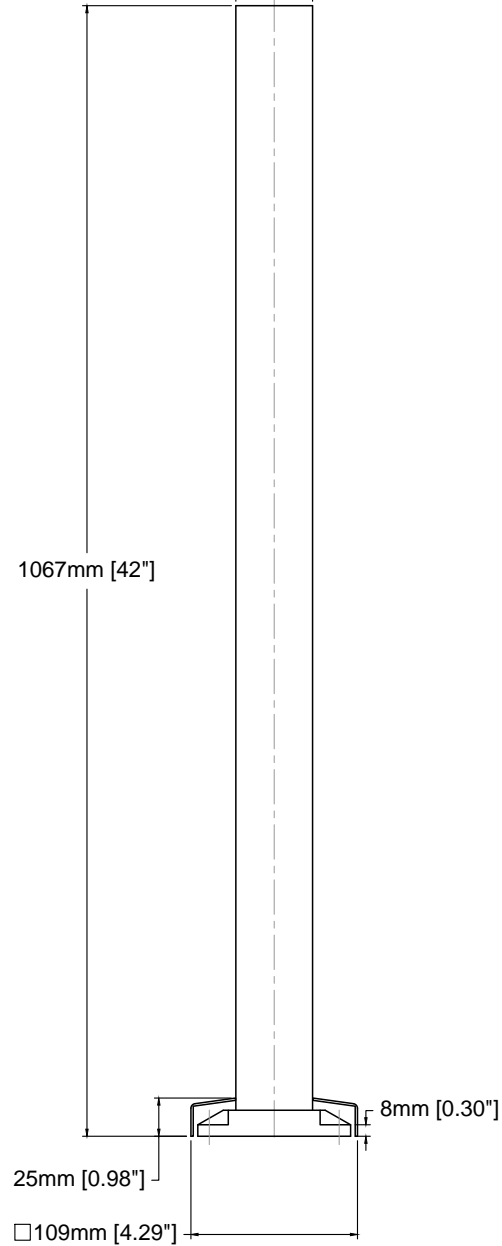


127A Aviva Park Dr.,  
Woodbridge, ON, CANADA  
www.euroeac.com  
Toll Free: 1-800-465-7143

TITLE: PRE-FABRICATED POSTS  
SSPSQ40XX

DATE: 02/14/2018  
SHEET: 1 of 1  
REV: 01

□ 50.2x50.2x2mm  
[2.00"x2.00"x0.08"]



Base Plate

Note:  
- All posts are SS316.