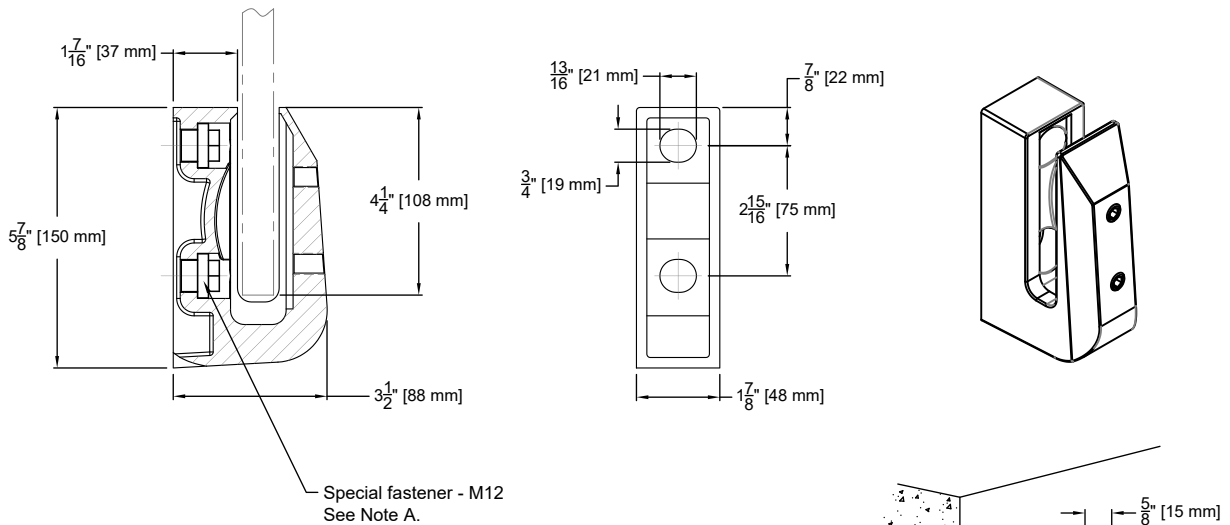


# Tilt-Lock Spigot Side Mount



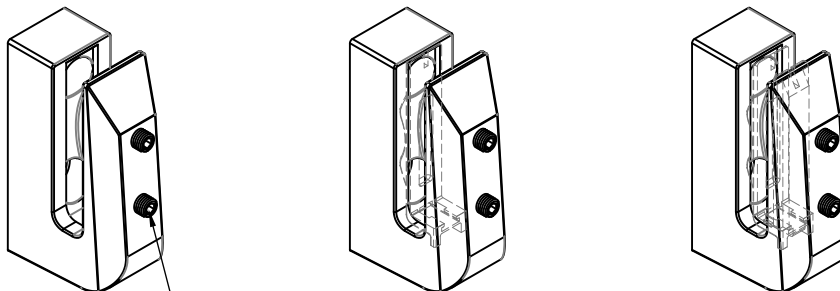
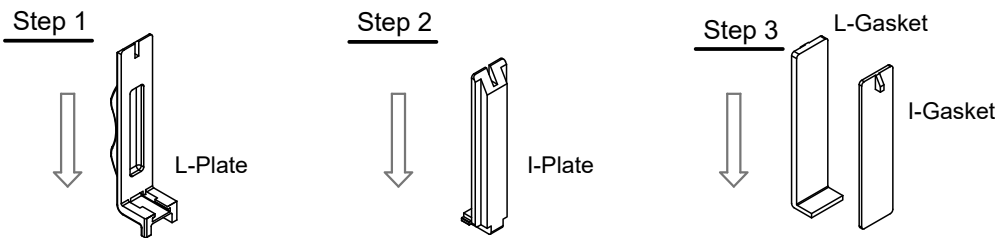
## Dimensions



FINISH	CODE
Satin	SSSPIGOTSIDE
Graphite Black	SSSPIGOTSIGB
Matte Black	SSSPIGOTSIMB

Note A- M12 fasteners for installation

## Gasket Installation



Set screws should be loose for gasket installation

Note: After installing the glass into the spigot slot, tighten the upper and the lower set screws to tilt the glass backward and forward respectively.

Glass Size (mm)	Gasket Colour
12	Yellow + Red
12.76	Yellow + White
13.52-14.28	Green + Red
15	Green + White
16.76-17.52	Purple + White